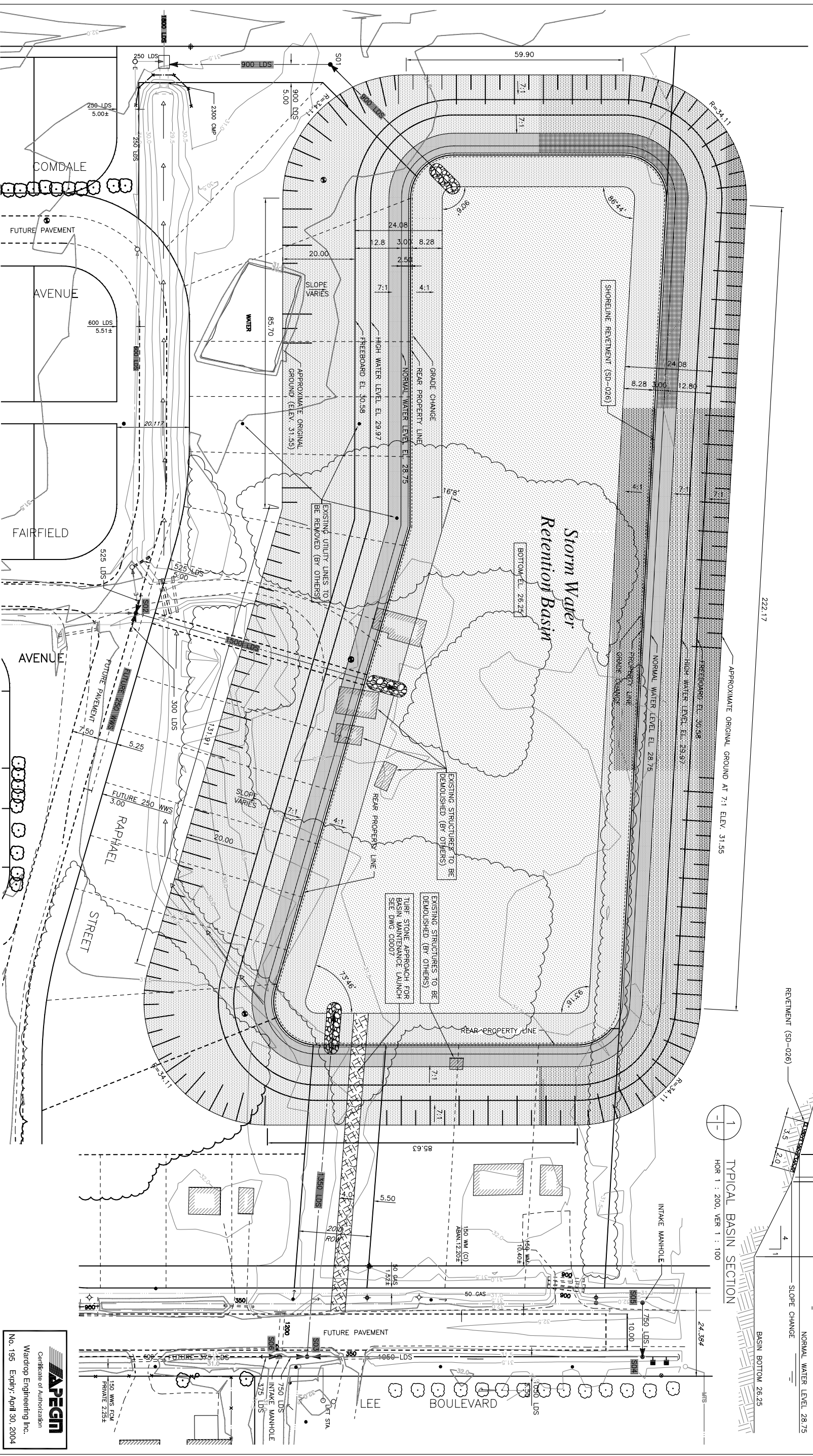
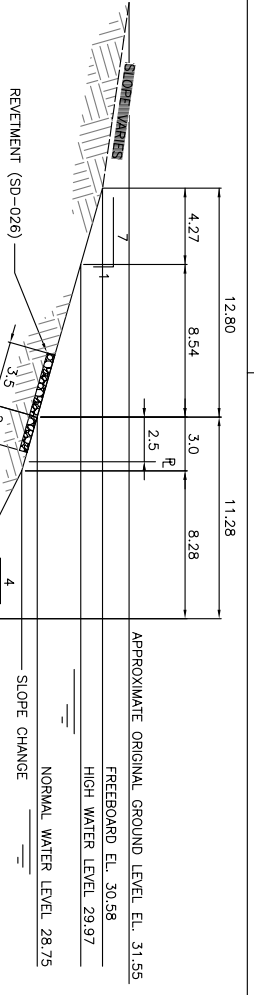




DWG NORTH



222.17



TYPICAL BASIN SECTION
HOR 1 : 200, VER 1 : 100

150 MM	WATERMAIN	150 MM	BEND	ANCHOR	LOCATION APPROVED	BL. COTY OF WINNIPEG 82-020	ISSUED FOR TENDER	03.12.09	DATE	03.12.09	BY	DATE	03.11.17	DATE
400 FM	FEDERMAIN	400 FM	TEE	TREE	UNDERGROUND STRUCTURES	Elev. 232.892m	ISSUED FOR APPROVAL	03.12.09	DATE	03.12.09	BY	DATE	03.11.17	DATE
250 WMS	LAND DRAINAGE SEWER	300 LDS	CURB STOP	LEGAL DIMENSION										
250 WMS	WASTEWATER SEWER	250 WMS	PLUG	SLURRY BAR										
300 GS	COMBINED SEWER	300 GS	MANHOLE	TRAFFIC SIGNAL										
200 FCM	FORCEMAIN	200 FCM	CATCHBASIN	GAS										
Ø	JUNCTIONS	Ø	CURB INLET	HYDRO										
Ø	HYDRANT	Ø	ADDRESS	MIS										
Ø	VALVE	Ø	HYDRO POLE	SIDEWALK										
Ø	REDUCER	Ø	LIGHT STANDARD	CURB										
EXISTING	LEGEND-PLAN	PROPOSED	EXISTING	LEGEND-PLAN	PROPOSED	EXISTING	LEGEND-PLAN	PROPOSED	EXISTING	LEGEND-PLAN	PROPOSED	EXISTING	LEGEND-PLAN	PROPOSED

APEN
Certificate of Authorization
Wardrop Engineering Inc.
No. 195 Expiry: April 30, 2004

WARDROP Engineering Inc.
S.E. HARNISH
REGISTERED PROFESSIONAL ENGINEER
CONSULTANT DRAWING NO. 0312940900-DWG-00001

THE CITY OF WINNIPEG
PLANNING, PROPERTY & DEVELOPMENT DEPARTMENT
FAIRFIELD PARK LOCAL IMPROVEMENT DISTRICT
STORMWATER RETENTION BASIN EXCAVATION,
OUTFALLS & ASSOCIATED WORKS
STORMWATER RETENTION BASIN
SITE PLAN
SHEET 1 OF 7
C0001

X:\C0001_A TO C\0312 OF WINNIPEG - PLANNING, PROPERTY & DEV\0312940900 - FAIRFIELD PARK SIMPSON, 2003 DESIGN\04\TENDER\14\0312940900-DWG-00001.DWG 03.12.09 08:50